

MULTI PUTTI / Polyvalent Putty

MULTIPURPOSE USE. IT CAN BE USED TO REBUILD,
SEAL AND PROTECT ANY TYPE OF SURFACES.

IVEGOR

IVEGOR



Multi Putty (kit)



Protection of any surface type, either exposed to the air or in constant or alternated immersion in sweet or sea water. It also protects surfaces exposed to chemical and environmental corrosives, as well as those ones underground or subject to the impact of weather.

It is used to rebuild, seal, block and stick different types of materials and shapes.

For example, on materials such as iron, steel, aluminium, copper, lead, zinc-coated metals, cement, concrete, marble, ceramics, glass, PVC, and anything else.

RANGE OF APPLICATION:

- Engineering works.
- Hydraulic constructions.
- Merchant, fishing and other types of vessels and ships.
- Navigation.
- Divers.
- Ship salvaging and recoveries.
- Plumbing.
- Industrial maintenance.
- Swimming pool maintenance.
- Garages.



MAIN QUALITIES:

- EXCELLENT ADHERENCE AND RESISTANCE ON AND BETWEEN THE MOST VARIED SUPPORTS.
- IT CAN BE APPLIED OVER DRY AND WET SURFACES, EITHER IN AIR OR IN SWEET AND SEA WATER.
- EXCELLENT MECHANICAL AND CHEMICAL RESISTANCES: RESISTANT TO WATER, OILS, SOLVENTS AND DILUTED ACIDS AND ALCALIS.
- EASY HANDLING AND APPLICATION. MALLEABLE LIKE A MASTIC AND ADAPTABLE TO ANY SHAPE AND SURFACE.
- IT DOES NOT CONTAIN ANY SOLVENTS (NO VOCS) AND IT DOES NOT CHANGE ITS VOLUME WHEN IT CURES.
- ACHIEVES A HIGH LEVEL OF HARDNESS, ALLOWING IT TO BE MECHANIZED, DRILLED, SANDED AND PAINTED.



FREQUENTLY USED APPLICATIONS:

Due to its extraordinary adherence and hardness qualities, as well as its fantastic applications over wet or immersed surfaces, MULTI PUTTY is used for a wide range of situations:

- To seal leakage in ships and vessels.
- To seal cracks and fissures in concrete, dams, tanks, submarine emissaries, plumbing, walls, etc.
- Joinery seal and plumbing re-construction.
- Re-construction and joinery of different elements and materials such as pipes.
- Long lasting protective and resistant coating against immersed or half-immersed structures like platforms, piers, structural pillars on oil-rigs, and other hydraulic works.
- To seal, reconstruct and reinforce metallic structures where welding / joinery is not possible.
- To seal swimming pool cracks and to stick tiles. No need to empty the pool.

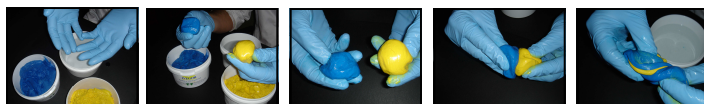
MULTI PUTTI / Polyvalent Putty

IVEGOR

IVEGOR

PREPARATION:

- Mix the same amount of basic component (yellow) and curing agent (blue) till you obtain a homogeneous green mass (without streaks or seams)
- With this difference in colours, it is easy to recognize that the mixture is well prepared.
- We recommend to moist your hands or gloves before and during the mixing to avoid stickiness and to facilitate this task. It's about moisturing the mixture a bit, do not dilute!
- You should only use the amount of components needed within the time of application, that is 20 minutes at 20°C.



Keep your hands always moist to avoid stickiness and to make the application easier.

Same amount of each component / color.



Mix it till there are no streaks or seams left.

A homogenous green colour will show us that the mix is right and ready for application.

APPLICATION:

- With moist hands and gloves, you can model and spread the mixture, giving it the desired shape and thickness. We recommend 0,5 cm to 1 cm as a standard thickness.
- It is convenient to press the mixture while it is extended to improve adherence.
- We can apply it over dry and wet surfaces, in water or in air.
- Surfaces must be clean, without oxides, grease, paint, impurities or other defects that inhibit the correct adhesion of the Multi Putty.
- Sanding, scratching, filing or other procedures to get the surface ready will improve its adhesion.



KIT SIZES

Set (kit) : 500g
(250g+250g).

Set (kit) : 1 Kg
(500g+500g).

Set (kit) : 2 Kg
(1 Kg+1 Kg).

Set :
10Kg (5 Kg+5 Kg).

If you are interested in bigger amounts, please contact us.

PRESERVATION

Shelf life: minimum 18 months.
Usually, a much longer shelf-life can be achieved, whenever each component is stored in the original and closed (or re-closed) package in normal storage conditions.

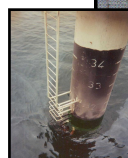
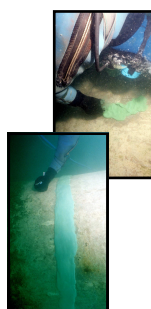
SPECIFICATIONS

| | |
|---|---|
| Type | Two components putty, formulated by a base of epoxy resins without solvents (no VOCs) and selected loads. |
| Proportions. Mixing Amounts. | Same amount of each component. |
| Total Weight | 1,600 Kg/l |
| Temperatura Resistance | 200°C (aprox) |
| Consumption | 1,600 Kg/m ² /mm |
| Curing | The curing time will be affected by temperature. THE HIGHER THE TEMPERATURE THE QUICKER THE PROCESS. Accordingly, when the temperature descends, the curing process slows down. |
| -Pot-life: Mixture's life, since the make of the mix to its application. | 15/20 minutes at 20°C. |
| -Total | 4/6 days at 15/20°C. |
| Flexural Strength Resistance | 200 σ f(Kp/cm ²) |
| Compression Resistance | 800 σ f(Kp/cm ²) |

Crack and fissure sealing in steel, iron and concrete structures.



Crack and fissure sealing in underwater or wet concrete structures.



Protective coating for immersed and semi-immersed structures of oil-rigs or piers.



IGNACIO VEGA GOROSTEGUI, S.A.
Fernández Hontoria, 6 -39610 Astillero (Cantabria). SPAIN
Tel: +34 942 540 100 Fax: +34 942 558 732
www.ivegor.com ivegor@ivegor.com